

1

2

3

4

5

6



# iBright ELECTRONIC DRUM Operating Manual



### Dear Customer

Thank you for buying our hand roll electronic drum kit. Please pay attention to the operation instructions. Enjoy your drum session!

### I.Specification:

- 9 drum pads: (includes 2 crash cymbals, ride cymbal, open/close hi-hat, snare, base drum, high tom, low tom, floor tom )
- 2 drum pedals: (includes 1 hi-hat, 1 base drum)
- 12 demo songs, 7 drum sounds, 9 accompaniment
- Volume Control: lever 9
- Speed Control: lever 15
- Record and play function
- Audio input, plug in your cellphone, tablet, PC and other devices that support music.
- Speaker function
- Lithium battery

### II.Features:

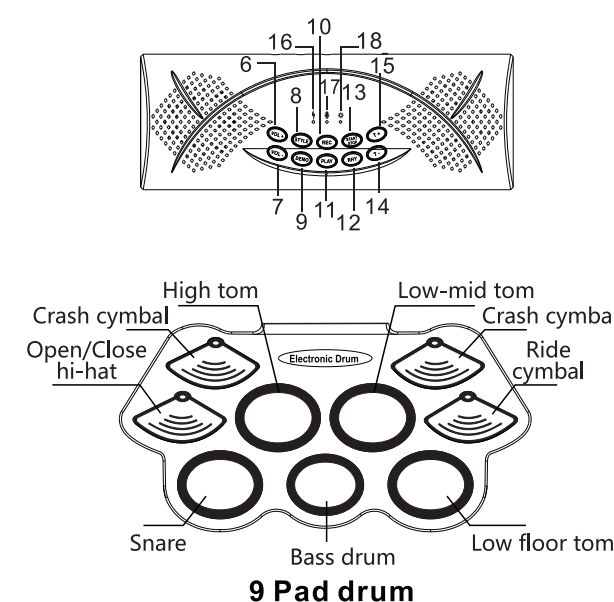
- Portable hand roll drumkit.
- Fit for family entertainment/friends gathering/and drum practice
- Multi-sounds, simulating real drum kit
- Standard drum configuration and extension interface for pedal
- Includes accompaniment/ demo songs and play speed control for learning the drum.
- Record function.
- Two high-quality stereo speakers
- Audio input, so you can choose any music you like to practice
- Connects with your earphones for quiet play function. ie no disturbing others
- Connects to external speaker for stereo sound.
- USB MIDI port, connects PC to play with all Midi software and electronic drum games. Example: Sonar, Cubase, Nuendo, Ezdrummer (only works if the model has MIDI function)

### III.Accessories:

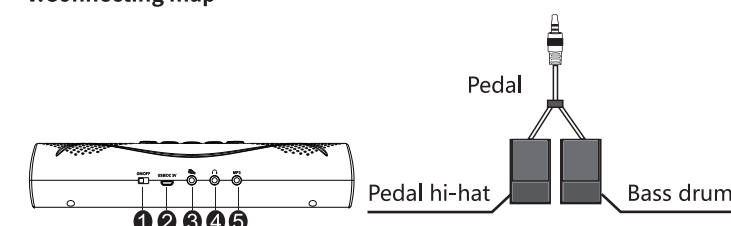
Drum Kits\*1, Pedal\*1, Manual\*1, USB Cable\*1, 3.5 Audio Cable\*1, Drum Stick\*2 USB Adapter\*1

1

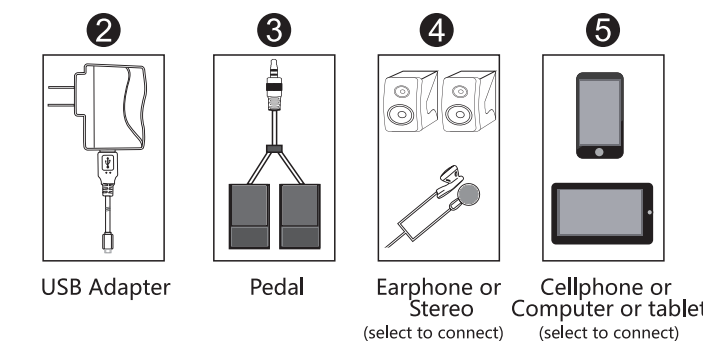
### IV.The appearance of drum kit



### V.Connecting map



2



### VI.Function Description

No.	Name	Function Description
1	ON/OFF	Battery power switch
2	USB/DC 5V	USB port for power, by AC adapter or power bank
3		Pedals for Hi-Hat and Bass Drum
4		Audio output interface
5	Mp3	Audio input interface
6	VOL+	Volume up
7	VOL-	Volume down
8	STYLE	Try different drum sounds

3

9	DEMO	Recycle demo songs
10	REC	Press "REC" . LED lights up when the device is recording
11	PLAY	Plays the recording
12	RHY	Play accompaniment
13	START/STOP	Start to play/stop accompaniment recording demo songs
14	T-	Control the playing speed of demo songs and accompaniment
15	T+	Control the playing speed of demo songs and accompaniment
16		Charging LED indicator
17		Press "REC" , the LED lights up
18		Power on light

### VII.Pedal Instruction

- The drum kit supports one pedal Hi-hat and one bass drum. Both are single channel input.
- When the pedal is not plugged into the "FOOT PEDAL" jack , sounds will be Close hi-hat if you click "Open/close Hi-hat" ; When you plug the pedal in jack, sounds will be Close hi-hat if you step on the pedal; Sounds will be Open hi-hat when you step off.
- Once you plug in the pedal in the side FOOT PEDAL jack, one of the pedals has "Bass drum" function, the other one is for "Pedal Hi-hat" ;if you need Bass drum when playing, you have to step on the specified pedal

Note: Each pedal has its specified function

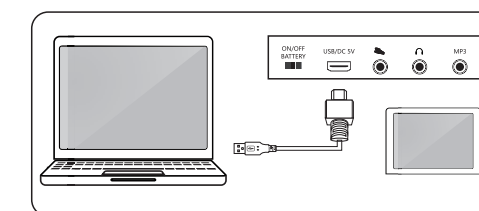
### VIII.POWER ON/OFF

- When you switch on the drumkit, the LED light will turn on.
- After you switch on the drum kit, you can adjust the volume.

4

### IX.USB MIDI function (only works if the model has MIDI function)

- When connecting the usb cable between the drum kit and computer, the MIDI Data transmits.
- If transmitting USB Data , you should follow below steps carefully  
\*Please use standard usb cable
- Compatible with Win XP/Vista/7/8 and Mac OSX, drive free and hot plug
- Compatible with Sonar, Cubase, Nuendo, Ezdrummer, Etc. major sequencer software, VSTNSTi and all kinds of MIDI Drum kit games.



Note: The drum kit will enter into sleep mode if no action after 1 minute. Wake It up by hitting any drum pads.

### X.Troubleshooting

Problem	Reason	Solution
Power indicator does not work	External power adapter is not plugged in properly or USB cable is not inserted	Please check the external power cable
Abnormal sound	External power adapter Voltage shortage	Change to new external power adapter
Pedal does not work	The interface is not connecting	Remove and replug
No sounds (Headphone or audio)	1.No power supply 2.Volume is not adjusted well 3.Earphone not connected to the right interface of our drum	Please check the level of VOL and make sure all the interface are connected

5

### XI.Cautions:

- Do not use the drum kit in wet, or high temperatures
- Keep the drum kit level when in use. Do not place the drum kit near areas with strong electrical waves
- To avoid damage, do not place heavy objects on the product
- Do not pull or twist the body of drum kit, as it may damage the function
- Do not interfere with hard wiring of this product.
- When rolling up the drum kit after use , do not roll up too tight.

### XII.Specification:

- Product size 862\*483.3(L)\*324.3(W)\*45MM Weight:870G
- Input:USB DC 5V/1000mAh
- Material:Silicone

Distributed by K2 Sales Pty Ltd. PO Box 696 Black Rock Vic. Australia 3193  
www.k2sales.com.au

6